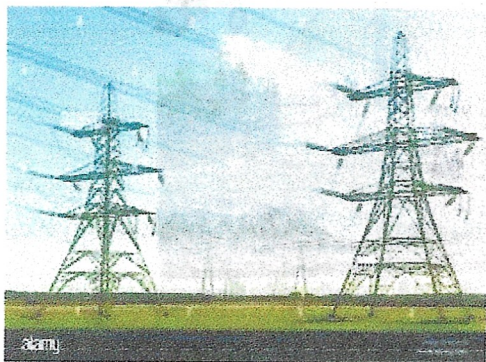


# Parish Newsletter

April 2024

## National Grid Proposal

Few of us knew of National Grid's proposal to build 50 metre tall pylons from Grimsby to Walpole, in Norfolk, along with four enormous substations, two very close to us, until a short time ago. When it was quietly



announced that there was to be a public consultation from 18<sup>th</sup> January until 13<sup>th</sup> March the enormity of the project didn't register. It was only when a group of concerned locals formed a pressure group, called "No Pylons" to oppose the scheme, and starting collecting support on social media, that it really took off. Consequently, there were real efforts locally to bring this to people's attention before the cut off date for people to have their say.

Victoria Atkins our MP and Lincolnshire County and District council have all strongly come out against this proposal; which is to build a network of overhead high voltage cable carries by pylons all the way down the coastal strip and finishing at Walpole, the aim being to bring much more capacity from offshore wind turbines, from undersea cables in Scotland, abroad and possible future battery storage plants and wind turbines built on our precious farm land in Lincolnshire For our local area it also means having two substations, each being about 35 acres in size and 30 metres tall. One possible site is just off the A1104 on the right hand side of the road heading towards Alford, near Saleby and the other farmlands between Saleby, Huttoft and Thurlby. If built, they would likely be the catalyst for wind farms, battery storage and of course more pylons going off in different directions. It could also impact many local businesses, tourism and our small local airfields. There is an undersea option, which National Grid has discounted as too expensive, but have yet to provide hard and fast evidence of their costings and how they arrive at their conclusion. This sub-sea option would also negate the need of substations along the route. The project is due to be completed in the next five to six years. Lets hope there is enough opposition to this proposal that they look again at the sub-sea option as the only sustainable and acceptable alternative for our peaceful and beautiful county.

*Jane Gray.*

## More Than a Yarn

January we regroup to begin another crafty year. We took a break for only 2 weeks and were all glad to get back together. Our weekly sessions see around a dozen wonderfully talented ladies meet to share knowledge and group gossip in abundance! Oh yes, and of course refreshments including home-made delights by one of our members, taking it in turns to tantalise the taste buds!! We always look forward to our Thursday afternoon therapy sessions  
*Julie Jenkinss*

## Spring is On It's Way

This year has been a very busy time for Pippa and Ben



*Pippa Williams*

Williams with over 850 lambs being born, which meant a lot of sleepless nights for both of them, making sure that all the lambs were born successfully.

With all the rainy weather we have been having it's good to see a new little life coming into the world.

Once again Eastfield Farm held their well attended Lambing Experience event,

## Best Kept Garden Competition



Time to start thinking about the Maltby le Marsh Annual Garden Competition, it's still a bit wet in the garden, but

that's no excuse for not planning the flower beds. The gardens will be judged in July and the judges will not go inside your garden, the winner will receive a garden voucher from Woodthorpe Garden Centre



## Maltby le Marsh Parish Council Annual Parish Meeting 2024

I open my report by again thanking my fellow Councillors for your help and support in the last year. At the AGM in May, Jane Gray was elected Vice Chairman. Brenda was sincerely thanked for her years as Vice Chairman and previously Chairman. She has been a councillor since 1983 and I pleased to say remains heavily involved. I also thank Jane for standing in for me at the September meeting. The May elections pleasingly saw us all unopposed for another 4 years.

Thanks also to Noi Sear for her regular attendance. She keeps us abreast of what is happening at County and has pursued several local issues for us. I am sure the road to Mablethorpe will be repaired before long. Thanks also to Travis Hesketh for his involvement following his election as District Councillor in May, defeating Sandra Harrison. We look forward to seeing more of him in the coming year. I also personally hope his efforts to prevent the proposed network of National Grid pylons is successful.

We have held 5 meetings during the year. Graham ensures our meeting run smoothly, I am sure we all thank you for what you do efficiently and expeditiously. The saga of foot-light 20 was finally resolved although not until after a flashing hiccup.

The Garden Competition for the Anne Graves cup was judged again following last years cancellation. The winners for the fourth time were John and Rosemary Clark of Dovecote House. The police camera van has made regular appearances during the year and I am sure has a positive effect. I still have a supply of Slow Down stickers if anyone wants to replace a faded one or hasn't got one on the pink bin. The pavements, or at least the majority, were, I think you can see, repainted in November. Unsurprisingly weeds are already coming through.

Kimberly Picket the new Police and Crime Commissioners Safer together co-ordinator for East Lindsey, attended February's coffee morning at the Village Hall. She gave an excellent presentation and agreed to pursue matters of concern.

Pippa and Ben Williams opened their cafe in April. With so few facilities in the village it is pleasing to see a new one. The Village Hall Committee has organised several functions during the year. They are also hoping to restart the Short Mat Bowling Club. I wish them success. Kevin Proctor and his committee work hard for the village. We continue to administer the Anne Bolles Educational Foundation. Sadly, despite wide advertising, there were no applications for grants again. Graham has re-registered with the new Charity Commission set up.

John Aldridge continues to produce an excellent newsletter. Many thanks to him and those who help him deliver it. Thanks also to Anthony White for his regular articles. They give a realistic insight into what farming in today's world means and I am sure open many eyes.

We have considered several planning applications and responded accordingly. One wonders whether ELDC take any notice of our views. Further property development in the village continues apace. In conclusion I thank Robert Aldridge for his work in the Village and John Clark for auditing our accounts.

*David Whitehouse. Chairman*

## Maltby le Marsh Village Hall Annual Chairperson's Report

I would firstly like to thank all present and previous members of the committee for their continued support and splendid efforts in helping to run and fund-raise for the village hall.



Extreme thanks go to Pearl and Brenda who make the drinks each and every month for the coffee mornings, also Anne, who does a splendid job of waiting on the tables and serving beverages and biscuits to our visitors. Thank you also to Wendy for baking the cakes etc. to sell on the stall, as well as Angie, Helen, Jane and Linda who regularly donate baked goods, also to Susan for organising and running the tombola stall. Thank you to Susan, Derrick and Ann for their help in setting out the tables and chairs on the evening before. A big thank you to Maureen for her past work in the role of our valued treasurer. Maureen has decided to retire from the position and thanks to Wendy for helping her with the banking and monthly figures last year. Derrick too has been a great asset to the village hall with his fabulous cooking skills with help of his wife Ann. Thank also to Julie for keeping the hall in tip top condition, it has been commented many times on the cleanliness of the building, especially the hallway, kitchen and toilets.

Various events have taken place in the last twelve months, such as the King's Coronation Tea that was a great success, thanks to present and past member's hard work and dedication on advertising. Also the coffee morning incorporated a cooked breakfast, made by Graham and David from the Louth Hotel, which brought in additional income. Then there was the Soup and Roll morning which was provided at the Remembrance service coffee morning. The Christmas Dinner, which was a marvellous success, was free to all pensioners above the age of 65, all others were charged a reduced fee of £5.00 per person. A big thanks to Wendy for advertising the venue and taking bookings for the event, also thanks need to go to Derrick, Anne, Susan Baildon, and Ruth for their help in preparing and serving the meal and drinks.

Fund-raising is done with the help of the groups that use the hall including the Women's Institute, Dog Training club, and the More Than a Yarn group of friends.

Hall lettings are steady with the addition of the new sign board advertising the mobile number for bookings, kindly taken by Wendy.

I must also thank our friends and visitors to the Monthly Coffee Mornings for their help in putting away the chairs and tables after the event. It is very helpful of them and very much appreciated.

*Chairman, Kevin Proctor,  
Strubby, Beesby, and Maltby-le-Marsh Village Hall.*



### Floods, Protests & Farming

You will see that I put farming at the end of the title it seems that farming is the last thing on our list of things to deal with! The weather has been a massive headache with the constant rain meaning we have been unable to get on the land to do any work. We estimate we have lost 25% of the crops we had drilled in the autumn which means we will have to redrill this spring, weather permitting! This will incur yet more input costs.



You may have noticed the farmer protests breaking out across Europe as well as parts of the UK. This is unprecedented in the farming world especially on such a large scale. This indicates how major the problems are for the farming community. When governments start trying to dictate to people, who are already struggling to make a living, what they can and can't do with their own land there will be trouble! The 'rules' these governments are trying to impose on farmers have been produced by people who don't live or work in the countryside and who have guaranteed incomes and plenty of food to choose from! In England the protests have been few and far between as farmers are being supported by government to take land out of food production for wildlife, being paid a reasonable rate to do so and it isn't compulsory. Whether it's a good idea that prime food production land should be left for the wildlife is only something we will learn in time, who knows? The protests here are more about the low prices for our produce, wheat is approx £160 per ton & barley is £140, compared to £100 per ton 40 years ago. Compare that to wages over the same time period and they would now be £9000 per year when they are actually around £35000. This is the pressure farmers are under.

At some time point this year we will have a General Election, think everyone is ready for a change whoever that may be. I encourage you all to use your vote (even if it's none of the above) as our ancestors sacrificed much to provide us with democracy.

*Anthony White*

### Maltby le Marsh WI

Maltby le Marsh WI continues to meet on the third Monday of every month in the village hall at 7.30pm.

After celebrating our 44<sup>th</sup> Birthday in January with a delicious afternoon tea, we were then spoilt in February with a visit from Malcombe & Alex from Coastal Distillery located in Mablethorpe who brought along their artisan spirits for us to try, our particular favorites being Toffee Vodka and their Coastal Gin.

Our events calendar for 2024-2025 is currently being compiled, and we are forward to further interesting and informative evenings and days out. Please do drop by and enjoy an evening, you would be most welcome.

*Angie Emmerson*

### Easter Coffee Morning

An Easter Bonnet competition at the Easter coffee morning in the village hall was a hard decision for the judge to award the first prize, but, after much deliberation by the judge, Travis Hesketh, 18 month Isla Hildreth was declared the winner.



*Sally Wilby and Linda Alldridge*

With only 2 entrants in the adults group, it was still a difficult decision but finally Linda Alldridge was declared the winner and runner up was Sally Wilby



## Jhl;Theddlethorpe Nuclear Waste

District Councillor Travis Hesketh visited the Village hall coffee morning recently, asking people to take part in a survey regarding the Nuclear Waste Services (NWS) building a disposal facility in Theddlethorpe.

We have received over 1000 votes, and the result is clear that the community has voted against the proposal, with the outcome being the same as it was two years ago. Therefore, it is apparent that the community does not want a Geological Disposal Facility (GDF) built in this area.

<u>Vote</u>		<u>Vote</u>
Against a GDF	84.5%	852
Undecided	7.7%	78
For a GDF	7.7%	78

---

## Fern Lea Nursery

For advice on what to plant in your garden, there's no one better to ask than Robert Ibbottson who owns Fern Lea Nursery. Robert has many years experience and what he's forgotten is more than we can remember! Well worth a visit.

---

## Emergency Telephone Numbers

101 is the number to call when you want to contact your local police - when it's less urgent than 999.

111 is for the number if you need medical help but it isn't a 999 emergency.

Both services are available 24 hours a day, seven days a week and 365 days a year.

---

## New Dentist in Mablethorpe

A new dental practice has opened in the Marisco Surgery and is open for new NHS registrations, phone 01507 225226

## Council Meetings

Forthcoming Committee Meetings

Monday 13<sup>th</sup> May

Monday 8<sup>th</sup> July

Monday 9<sup>th</sup> September

Members of the public are welcome to attend meetings prior to their commencement at 7.30, there is a 10 minute public session where the public can ask questions, raise points, and make comments.

## Your Parish Councillors

Cllr. Mr D.Whitehouse (Chair)	01507450811
Cllr. Mrs J.Gray (V/ Chair)	01507 50372
Cllr.Mr A White	01507 450392
Cllr. B.Williams	01507 450246
Cllr. Mr S.Hill-Andrews	01507 451843
Parish Clerk Mr G.Simpson	01754 880131

---

## Village Hall Committee Members 2024

Mr Kevin Proctor

Chairperson/Secretary

01507450384

Mr Derrick Futcher Vice Chairperson

07828777273

Mrs Wendy Hill-Andrews Book Keeper

01507 451843

Mrs Susan Baidon Minutes Secretary

01507 451479

Mrs Brenda Williams

01507420246

Mrs Pearl White

01507 466311

Mrs Anne Futcher

07828777273